



# itom

## an Open Source Measurement and Evaluation Software

M. Gronle, C. Kohler, M. Wilke, W. Lyda, H. Bieger, W. Osten  
Institut für Technische Optik – Universität Stuttgart



### Software Design

#### Requirements

##### Hardware Control

- Wide-ranging support
- Easily extendable
- Real-time capability

##### Powerful Data Processing

- High performance system and algorithms
- Use well-known and tested 3<sup>rd</sup> party numerical libraries

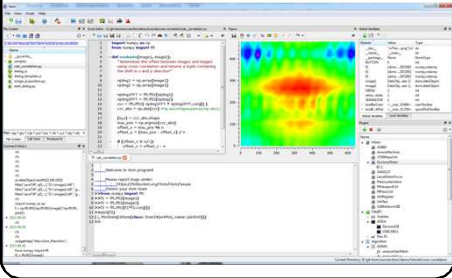
##### Rapid Prototyping

- Fully-functional GUI
- Flexible GUI design
- Support of runtime scripting

#### Solutions

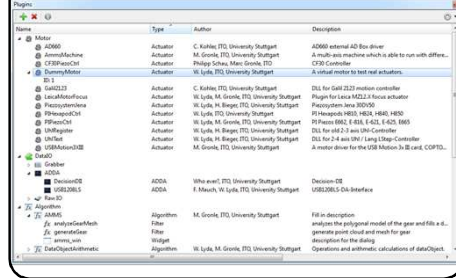
##### Core-Application

- C++, Qt-framework, platform independent
- Multi-Threading
- OpenCV based data structures



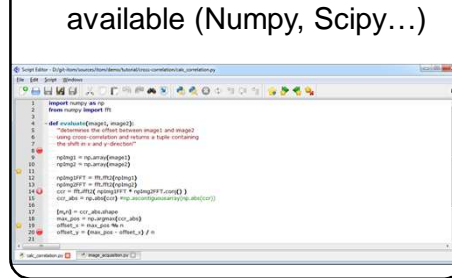
##### Plugin System

- Hardware-Plugins (cameras, actuators, I/O)
- Fast, complex algorithms



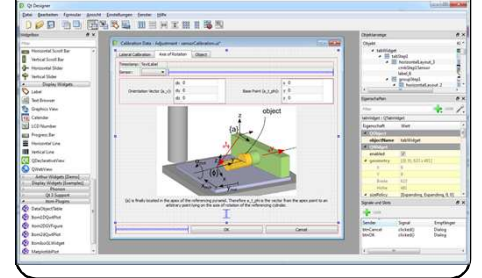
##### Python Scripting

- Embedded Python 3 scripting language
- Development support (Debugging)
- Many 3rd party packages available (Numpy, Scipy...)




##### Qt-based GUI Design

- WYSIWYG design tool
- Connectivity to Python scripts



### Exemplary Application: Fringe Projection Microscope



#### Hardware Plugins

- Camera control
- OpenGL based pattern projection using an LCOS
- Actuator control

#### GUIs

- Configuration dialogs
- Adapted live image window for easy sensor adjustment
- 2D and 3D plots for result visualization

#### Software Plugins

- Fast phase reconstruction and unwrapping in C++

#### Python Scripting

- High level measurement process
- Calibration
- Data storage and visualization

### Licensing, Binaries and Sources

#### Licensing

- **itom** (core application) is open source (**LGPL**).
- **itom SDK** contains common resources of core application and plugins. Its license is **LPGL + itom-Exception**. This exception allows the usage and linkage of the **itom SDK** in any plugin independent on its proper license.
- **Plugins** can be subject to any (including proprietary) license.

#### More information about itom

- [www.uni-stuttgart.de/ito/itom](http://www.uni-stuttgart.de/ito/itom)
- [itom.bitbucket.org](http://itom.bitbucket.org)

#### Windows 32/64bit setups and sources

- <https://bitbucket.org/itom>

